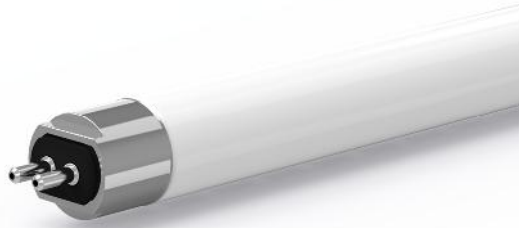


EasiFit® T5 Ballast-compatible LED Tube



Key Features

- Glass tube
- Direct-fit (plug-&-play) with T5HO ballast
- Efficacy: 104-117 LPW
- Power consumption: 28W
- Light output: 2900lm to 3200lm
- CCT: 3000K, 3500K, 4000K, 5000K
- CRI > 80
- Socket Type: G5 (standard T5 lamp socket)
- Beam angle: 185°
- Input voltage: 110V-277V (50-60Hz)
- Operating temperature: -4°F to 113°F
- Warranty: 5 years/50,000 hours
- UL Type A certified
- DLC qualified for utility rebate

Description

Aleddra's EasiFit® T5 LED tube lamp is a UL Type A internal driver tube that is compatible with F54 T5HO ballasts. With a price almost comparable to a T5 tube yet with great energy savings and longer lifetime, the end user of this plug-&-play T5 LED tube can achieve a very quick payback on the retrofit investment.

The EasiFit T5 LED tube features a full glass housing body, thus giving it the exact look-and-feel of the fluorescent T5 and a very wide lighting angle. It fits nicely into the existing T5 fixtures without any rewiring, and the best part is that people won't even notice it other than the light is brighter.

The EasiFit T5 LED tube comes with 5-year warranty and available in these color: 3000K, 3500K, 4000K, and 5000K.

Ordering Information

Product Label*	Lumen	Color Temperature
LLT-4-T5-28W-BC-30K	2900	3000K
LLT-4-T5-28W-BC-35K	3000	3500K
LLT-4-T5-28W-BC-40K	3200	4000K
LLT-4-T5-28W-BC-50K	3200	5000K