

Slim Shoebox Fixture

80W, 100W, 150W, 200W, 300W



Specifications

Lens Type	Type III and Type V
Driver	Meanwell driver
Efficacy	123 LPW
Wattage	80W - 300W
Color	50K (other colors optional)
CRI	>82
Input Voltage	110V-277V
Power Factor	>0.90
Operating Temp.	-40°F-140°F
Dimming	Wireless dimming optional
Rated Life	up to 50,000 hours
Warranty	5-year warranty

Ordering Information

Product #	Wattage	Light Output
ASB-SBL-3-80W-50K-PC	80W	9840 lm
ASB-SBL-3-100W-50K-PC	100W	12300 lm
ASB-SBL-3-150W-50K-PC	150W	18450 lm
ASB-SBL-3-200W-50K-PC	200W	24600 lm
ASB-SBL-3-300W-50K-PC	300W	37000 lm

Other color made to order.

Optional: Photo Cell, Wireless dimming controller, 480V driver
Square/Round mounting brackets

aledra

425.430.4555 | info@aledra.com | sales@aledra.com | www.aledra.com

Features

- NEMA 5-pin receptacle built-in
- Energy-efficient and cost-effective replacement for existing parking lot lighting luminaire
- Slim exterior design yields less wind drag, protective cover on the back prevents bird from nesting
- Light Distribution: Type III & Type V
- Surge protection
- Options: Wireless dimming controller, Photocell, 480V driver, square/round mounting brackets
- IP65 wet location

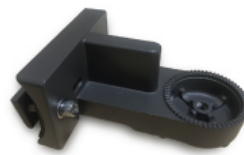
Product Compliance & Certifications:

- UL
- DLC 4.0

Description

Aledra's Slim Shoebox luminaire is an energy-efficient and cost-effective replacement for existing parking lot lighting luminaires. Its slim exterior design yields less wind drag and the protective cover on the back prevents bird from nesting on top of the fixture.

It is UL certified for wet location lighting and comes with IP65 rating. The default mounting option is a slipfitter. Other square and round brackets are available upon request and can be easily serviceable in the field.



Brakcet-SBL-E2
(For Round Pole)



Brakcet-SBL-D2
(For Square Pole)



Brakcet-SBL-U2
(For Wall Mount)

The fixture is warranted for 5 years and the L70 hours of its LED diode exceed 100,000 hours.

As an option, the fixture can be equipped with a 7-pin NEMA receptacle for use with a 3-in-1 wireless controller that allows the facility management team to turn on/off, set dimming level, schedule photocell activation, and program multiple fixtures through a centralized wireless lighting management system.

Dimension: 30"x14.5"x3.5"
Weight: 200W 27.6 lbs, 300W 28.4 lbs