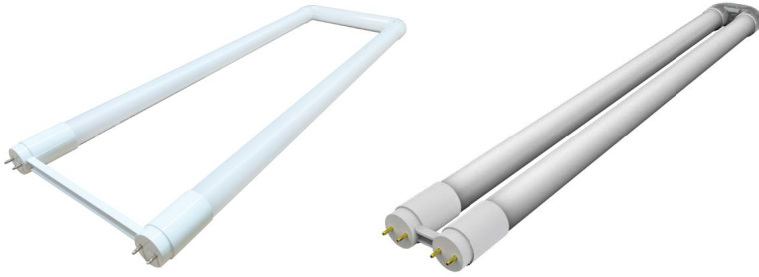


# U-bend T8 Tube (Type A+B, Ballast Bypass)

# ALEDDRA



U-bend T8 with 6" spacing

U-bend T8 with 1-5/8" spacing

## Specifications

<b>Lens Type</b>	Frosted
<b>Efficacy</b>	≥ 130 LPW
<b>Color</b>	3500K / 4000K / 5000K
<b>Power Factor</b>	> 0.9
<b>CRI</b>	> 83
<b>Input Voltage</b>	120-277Vac, 50/60hz
<b>Operating Temp.</b>	- 4°F to 104°F
<b>Power</b>	15W
<b>Light Output</b>	1950lm
<b>Dimming</b>	Dimmable
<b>Rated Life</b>	up to 50,000 hours
<b>Warranty</b>	5-year

## Ordering Information

Product #	Spacing	Color Temperature
PV-6UB-15WAB3M-35K	6"	3500K
PV-6UB-15WAB3M-40K	6"	4000K
PV-6UB-15WAB3M-50K	6"	5000K
PV-1UB-15WAB3M-35K	1-5/8"	3500K
PV-1UB-15WAB3M-40K	1-5/8"	4000K
PV-1UB-15WAB3M-50K	1-5/8"	5000K

## Features

- Support Type A configuration with Instant Start ballast
- Support Type B configuration (ballast bypass) with single-end and double-end wiring
- Support dimming via dimmable ballast or external dimming module (from Aledra)
- Current leakage protection, passed UL1993 new standard
- Reduces energy consumption up to 60%
- Shatterproof design: meets NSF requirements

### Product Compliance & Certifications:

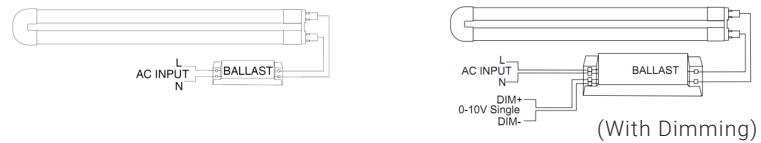
- UL listed
- DLC listed (6" spacing U-bend models)
- NSF certified

## Description

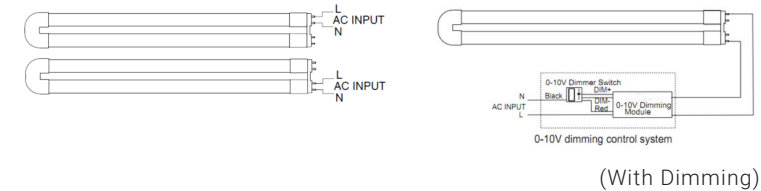
Aledra's New U-bend T8 tube is a smart choice for retrofitting existing fluorescent U-bend T8's with an energy efficient replacement without taking the costly alternative of complete fixture upgrades.

The U-bend tube is compatible for both direct ballast and bypass applications.

TYPE A(Ballast compatible):



TYPE B(AC directly, double end OR single end ballast bypass):



Dimensions:

